



Catterick Integrated Care Campus

Newsletter

For more information please contact
Mark Bennison: 07717 881811

March 2024

The new Catterick Integrated Care Campus is joint venture between the NHS and MOD that will deliver a range of primary care services in one building for the entire Catterick community.

When complete, the building will house dedicated space for healthcare and community services, as well as providing external parking and landscaped green areas.

Tilbury Douglas has been on site for several months now, here's an update from the site team on the works taking place.



Groundworks have started on site

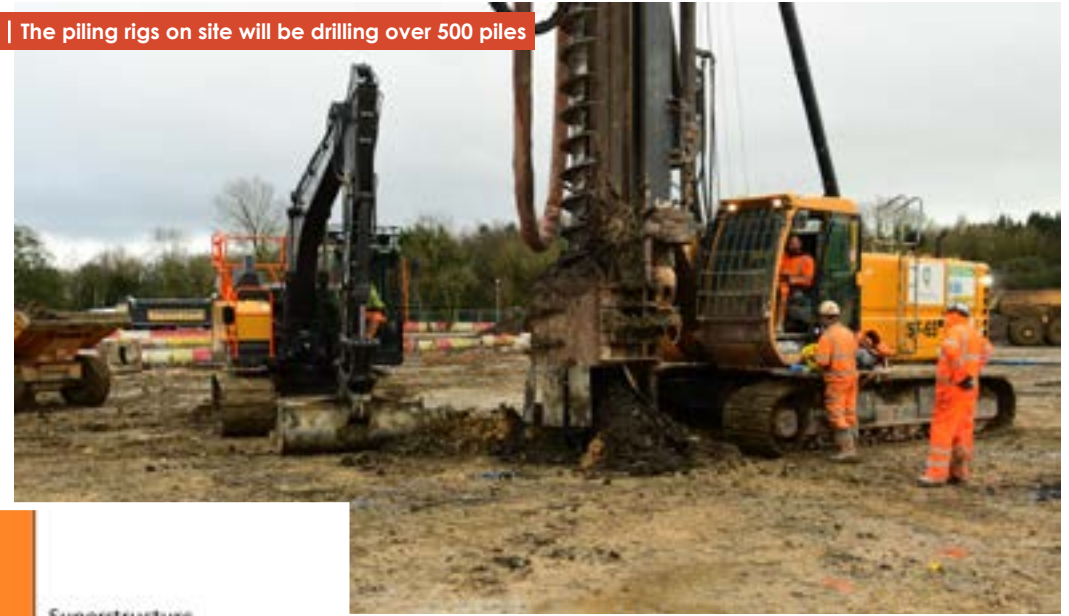
What's been happening on site?

- We started the service diversions in November, diverting the water and electric in preparation for the new build. This work concluded in January.
- We have been undertaking the reduced level excavation and stone fill, preparing the ground for the new building. We have also formed the piling mat for the piling rigs to sit on.
- Two piling rigs arrived on site in February. We are using continuous flight auger piles, which are drilled and concreted in one continuous operation, before reinforcement is placed into the wet concrete after casting. This method is much faster than continuous bored piles and produce virtually no noise or vibration, in comparison to traditional methods. There will be over 500 piles installed in total, to support the new building.

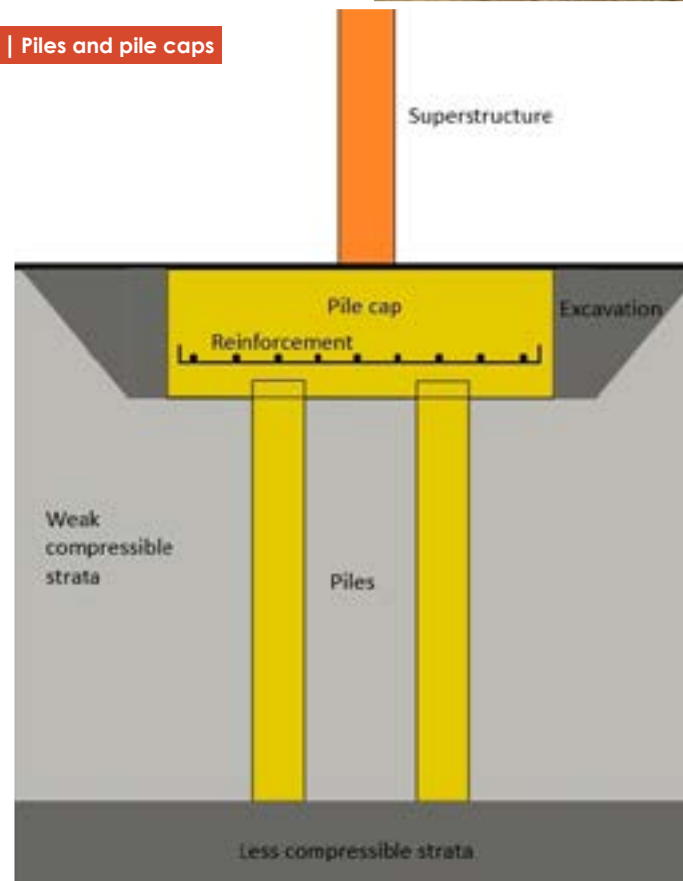
What's coming next?

- Our groundworks contractor started on site at the end of February. Works on site will include concreting the piling caps and beams. Piling caps are thick concrete mats that rest on top of the piles, creating a stable foundation and offering a larger area for distribution of the building load onto the piles. The beams then connect the pile caps together, further strengthening the foundations for the new structure. The steel frame will sit on top of this and will be arriving on site at the end of April.
- Over the next couple of months we will also be starting some drainage work, installing initial drainage runs.

| The piling rigs on site will be drilling over 500 piles



| Piles and pile caps



| Completed piles waiting for pile caps to be installed

Social Value

Tilbury Douglas is committed to delivering social value and throughout the Integrated Care Campus project we will be looking at ways we can benefit the local community. This includes creating new employment and training opportunities, using a local supply chain, and getting involved with local schools, colleges and community groups.

To date our team has completed 144 volunteering hours with **e50k**, a community interest company (CIC) that is dedicated to bringing Armed Forces and local civilian communities together.



144
VOLUNTEERING HOURS



We have engaged with three local schools; **Le Cateau Primary School**, **St Francis Xavier School** in Richmond, and **Cambrai Primary School**, delivering safety talks and speaking to students about careers in construction. Students from



Volunteers at the e50k event in May 2023

Le Cateau Primary School have also designed safety posters, which have been included on our hoardings outside the site (see left).

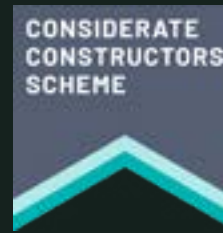
Tilbury Douglas has sponsored two local football teams, **Catterick Village FC** and **Catterick Garrison FC**, as well as undertaking a community investment initiative with **Darlington Railway Athletic Football Club**, that saw us team up with supply chain partners to provide new changing facilities for the club.

This is just the start of the community work we will be undertaking. In March we are hosting the Build UK Open Doors event, which sees construction sites open their doors to the public, taking them behind the scenes to showcase the fantastic range of careers available in construction. Then in April we will be at the British Forces

Resettlement Services (BFRS) National Careers Fair in Catterick, to speak to people about potential careers in construction and the opportunities we have.



Wernicks lower cabins onto pads to serve as changing rooms



Considerate Constructors Scheme

An independent non-profit organisation that works to improve the image of the construction industry. The Code of Considerate Practice commits the site to care about appearance, respect the community, protect the environment, secure everyone's safety and value their workforce. www.ccscheme.org.uk.

Tilbury Douglas

1 Thunderhead Ridge,
Glasshoughton, Castleford,
WF10 4UA

Ross Road,
Stockton-on-Tees,
TS18 2NN